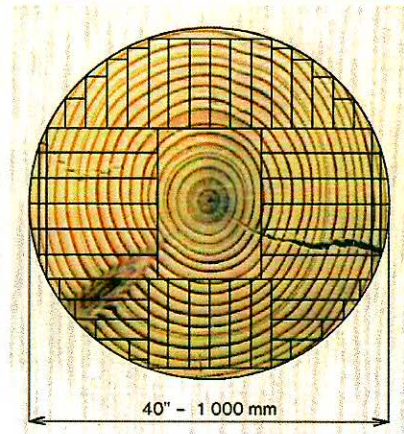
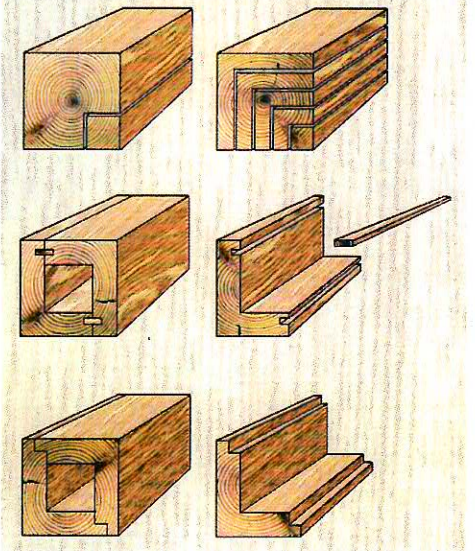
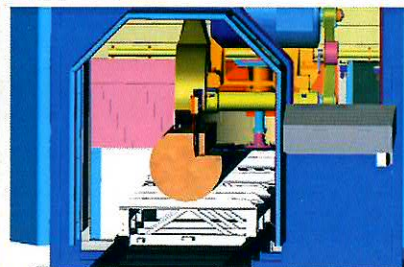
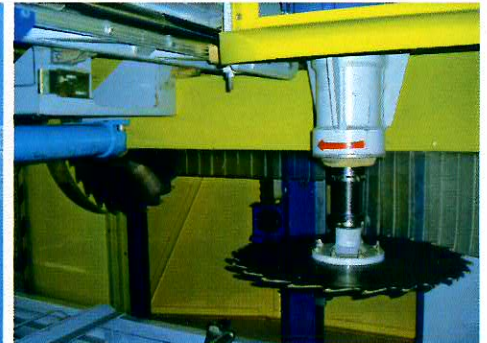
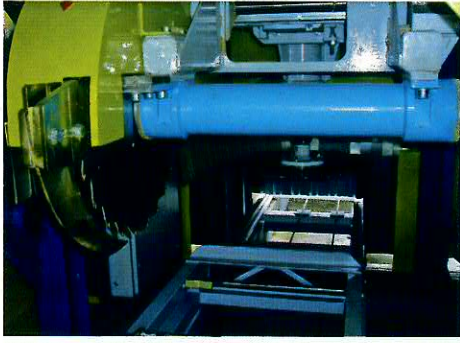


ANGLE DOUBLE – BLADE SAW UPD 100 SK THIRD GENERATION

THE MOST EFFECTIVE WAY TO ELABORATE AND UTILISE THE WOOD MATERIAL



Priority – high utilisation of wood material (10 -20% against the conventional methods of wood sawing)

- minimal waste and max. utilisation
- the variability of sawing (of radial and tangential cuts)
- cutting precision of $\pm 0,1$ mm
- high quality of surface finishing of sections
- cutting oversized roundwood with a diameter of 1 m
- production of squared timber, parquets, eurowindows, eurosquares
- easy installation and maintenance of the saw



HFK Group s. r. o.
Novozámocká 104
949 05 Nitra
Slovak Republic
hfkgroup@zmail.sk
Phone/fax:
00421 37 651 99 37

Technical parameters:

Weight
3 860 kg

Minimal. length of cut roundwood
700 mm

Max. length of cut roundwood
8 000 mm / 10 500 mm

Speed of movement of cutting
1 m/s

Diameter of saw blades
400, 550, 600 mm

Electric. input
45 kW

Machine part	Parameters	Measuring Unit	Dimension
	Height / Width / Length		mm
Weight		kg	2525
Diameter of cut roundwood max.		mm	1000
min.		mm	100
Length of cut roundwood max.		m	4 to 7
min.		m	0,7
Speed of movement to cutting		m/s	0 to 1
Dimension of saw blade for horizontal cutting		mm	400-600
For vertical cutting		mm	400-600
Rail track	Height / Width / Gauge	mm	130 / 780 / 660
	Length of single part	mm	3000
	Weight of single part	kg	140
Transporting carriage	Function height	mm	270
	Width	mm	870
	Track width	mm	660
	Length	m	3 or 6
	Weight	kg	390
Carriage drive	Height / Width / Length	mm	500 / 700 / 700
	Weight including tow rope	kg	105

		Parameters	Measuring Unit	Dimension	
Electric switchboard Rm1	Type		Heated SCHRACK		
	Protection class			IP 54	
	Height / Width / Length		mm	1800 / 800 / 400	
	Weight		kg	70	
	Electrical Equipment	Supply voltage		V	3x400V/230V, 50 Hz
Control voltage			V	230V, 50 Hz, 24 Vjs	
Electric Motors	Marking	Parameters	Unit	Dimension	
	Usage	161L2, Y-D	Output	kW	18,5
Horizontal saw blade		IM 2001 (B35)	Voltage	V	3x400 V/50 Hz
		IP 54	Rotations	min ⁻¹	2920
		With brake	Period of circulation	s	7
	Vertical saw blade		181 M2, Y-D	Output	kW
		IM 1001 (B3)	Voltage	V	3x400 V/50 Hz
		IP 54	Rotations	min ⁻¹	2940
			Period of circulation	s	25
Horizontal movement of supports	Electric gearbox	Output	kW	0,37	
	Wattdrive	Voltage	V	3x400 V/50 Hz	
	SUA 455A 72 N4, BRIG, Br5	Rotations	min ⁻¹	2940	
Vertical movement of the support's carrier	Electric gearbox	Output	kW	0,75	
	Wattdrive	Voltage	V	3x400 V/50 Hz	
	SUA 608B 81 N4, BRIG, Br10	Rotations	min ⁻¹	n2=4,6	
Carriage drive		Output	kW	2,2	
		Voltage	V	3x400 V/50 Hz	
		Rotations	min ⁻¹	2865	
Exhausting	Consumption of air at a machine exhausting of chips		m ³ .s ⁻¹	0,97	
	Air flowrate		m .s ⁻¹	25	
	Exhausting piping diameter		mm	100, 2x140	
	Weight of the machine with 6 pcs of rails		kg	3860	
Noisiness of the machine	Unloaded	L _W	(dBA)	104,5	
		L _A	(dBA)	86,6	
	Loaded	L _W	(dBA)	106,3	
		L _A	(dBA)	91,4	